

Ned Richardson

What the machines told me

Second floor Gallery

Studio place Arts

201 N. Main street, Barre, Vermont (USA)

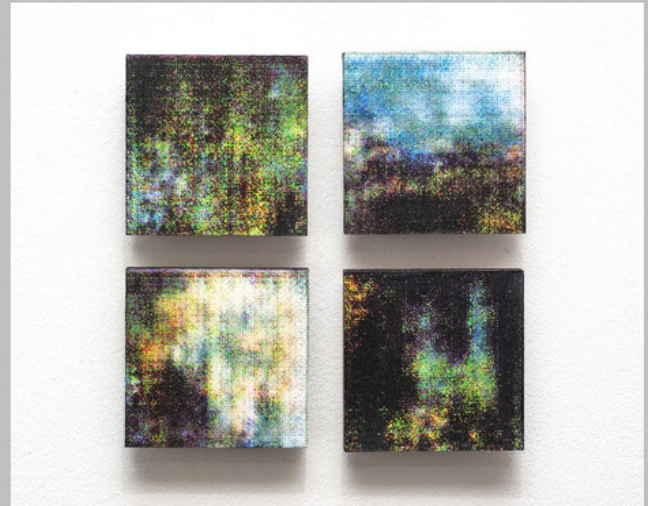
25 janvier – 5 mars 2022

What the machines told me by Ned Richardson

January 25 – March 5, 2022

Second Floor Gallery

For the past few years Richardson has been working with images generated by a deep learning system called a Generational Adversarial Network (GAN) that is trained on his own work. This endeavor began with Richardson perceiving a connection between the living forest networks which surround his home and the digital and technological networks that surround us all and seeking to understand and visualize both landscapes as one.



Artworks by Ned Richardson

Depuis quelques années, Richardson travaille avec des images générées par un système d'apprentissage en profondeur appelé réseaux adverses génératifs (GAN), qui est appliqué à son propre travail. Cette recherche a débuté lorsque Richardson a perçu un lien entre les réseaux vivants des forêts qui entourent sa maison et les réseaux numériques et technologiques qui nous entourent tous, et qu'il a cherché à comprendre et à visualiser ces deux paysages en un seul.

What the machines told me by Ned Richardson

January 26 – March 5, 2022

Second Floor Gallery

Building on his explorations of the connection between forest and technological networks, Richardson focuses on narrative, signaling, and scale as well as learning and perception in this latest body of work.

