

Galerie Arnaud Lefebvre

SHOW IN PROGRESS

October 26, 2023 - January 6, 2024

**Opening Thursday, October 26
6-9pm**

ACT I

Diana Quinby / Olga Theuriet

Starting October 26

Diana Quinby

Available images

Please mention caption and copyright for reproduction

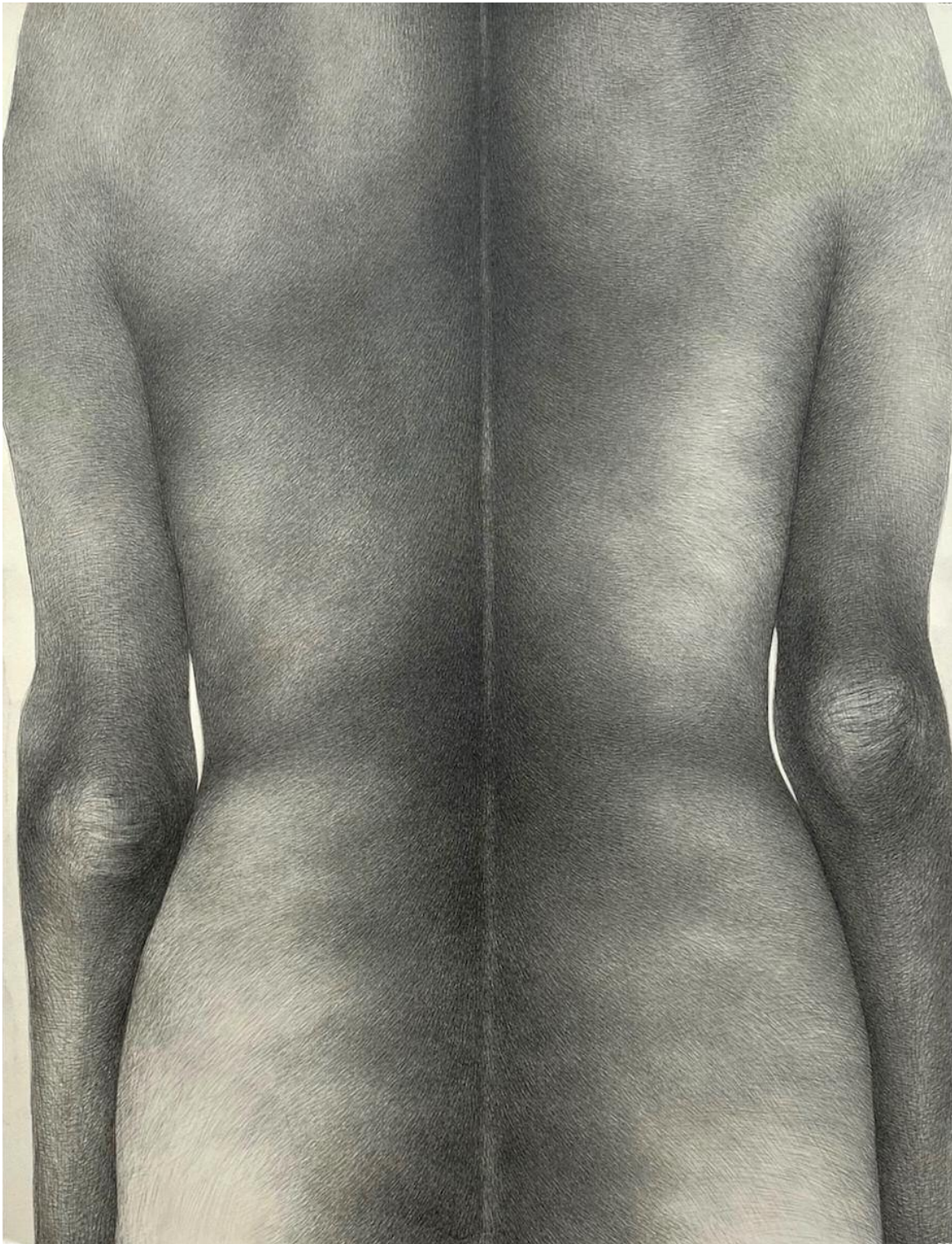


Diana Quinby

Trois dos, 2022

Graphite and colored pencil on paper, 90 x 140 cm.

Photo Diana Quinby, courtesy Galerie Arnaud Lefebvre

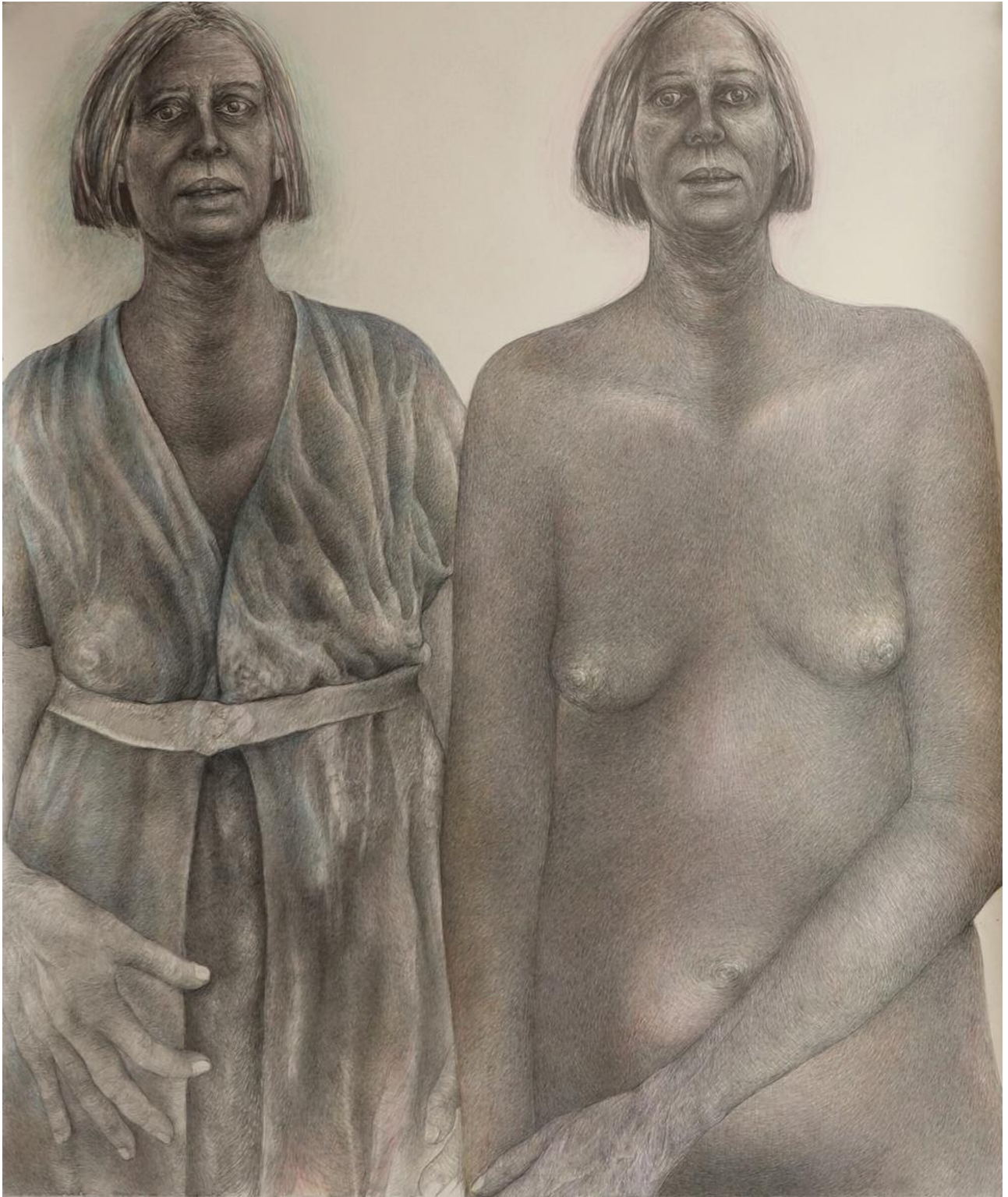


Diana Quinby

Grand dos, 2023

Graphite on paper, 127 x 97 cm.

Photo Galerie Arnaud Lefebvre



Diana Quinby

Autoportrait double V, 2023

Graphite and colored pencil on paper, 140 x 120 cm.

Photo Diana Quinby, courtesy Galerie Arnaud Lefebvre



Diana Quinby

Deux têtes, 2023

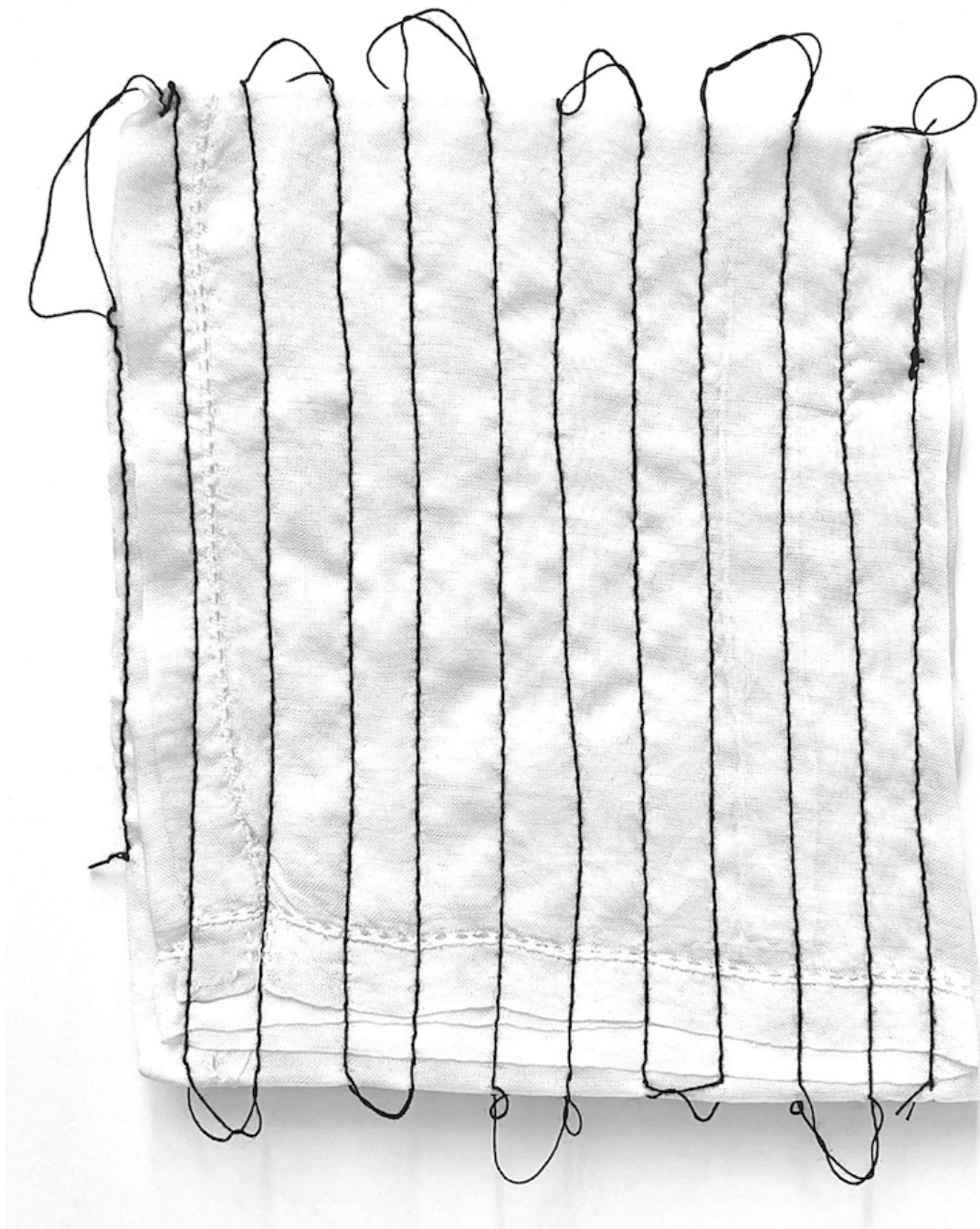
Graphite and colored pencil on paper, 100 x 150 cm.

Photo Diana Quinby, courtesy Galerie Arnaud Lefebvre

Olga Theuriet

Available images

Please mention caption and copyright for reproduction

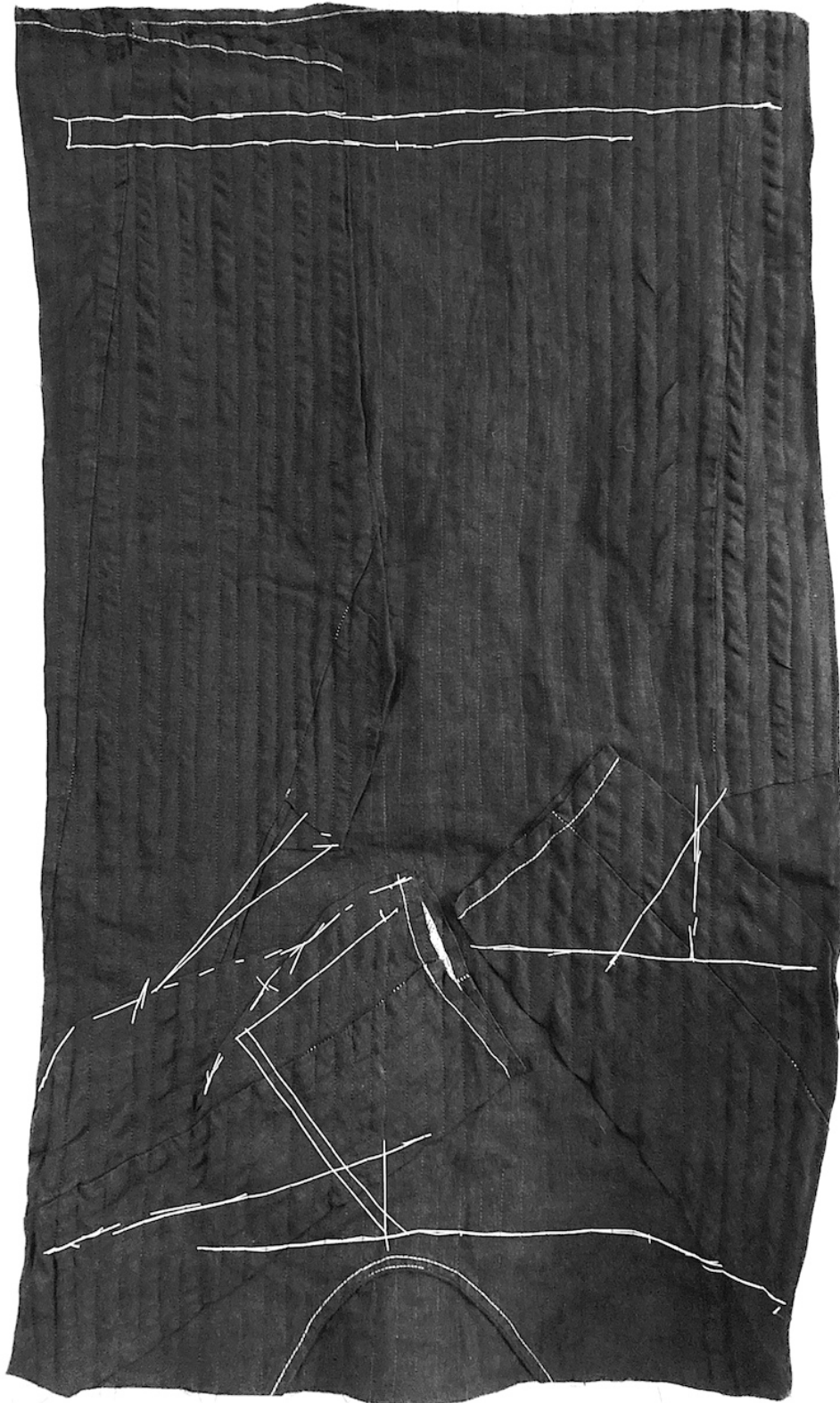


Olga Theuriet

OT23265

Handkerchief, thread, 10 x 9 cm. 2023

Photo Olga Theuriet, courtesy Galerie Arnaud Lefebvre

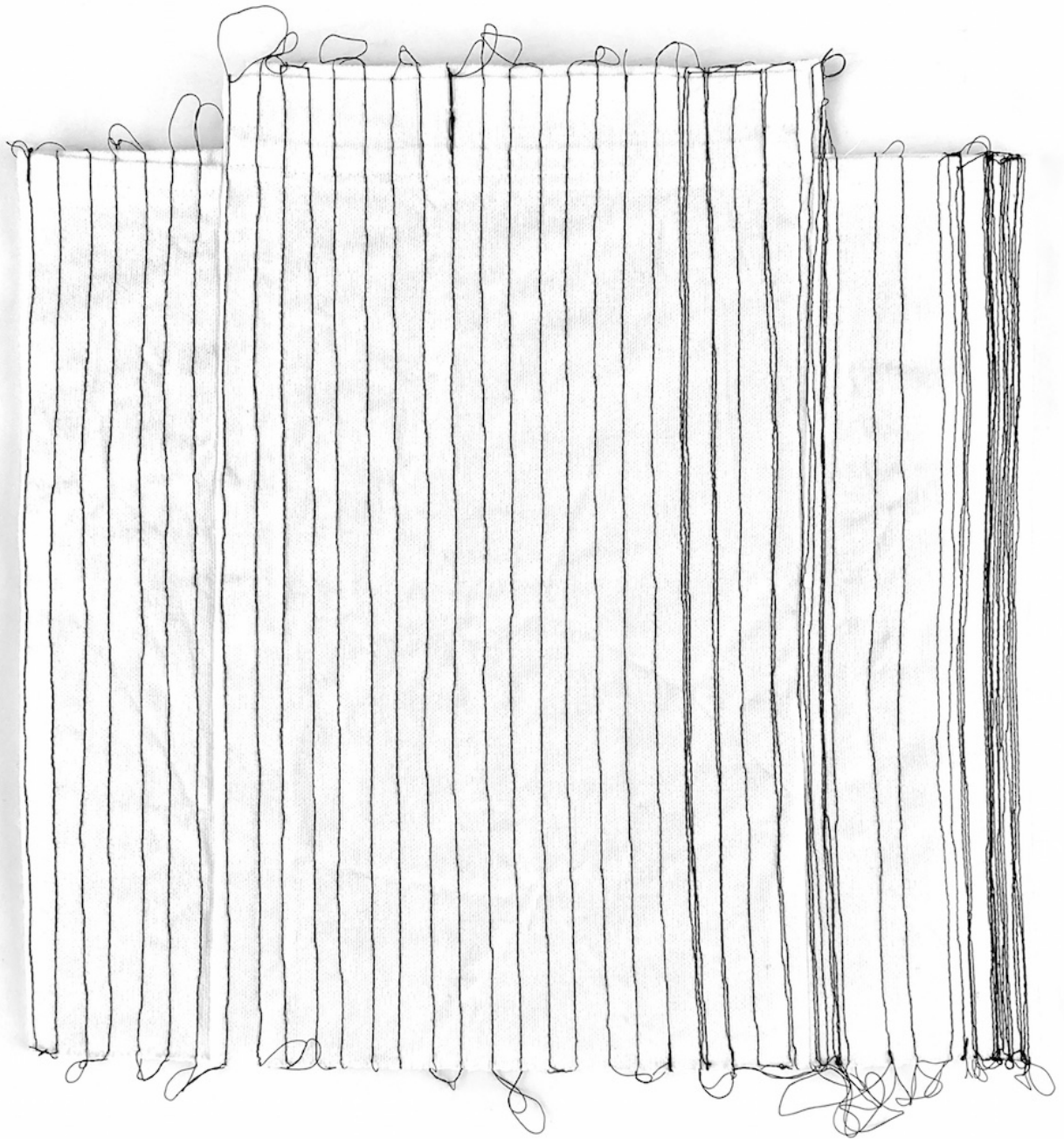


Olga Theuriet

OT23131

Dress, thread, 85 x 50 cm. 2023

Photo Olga Theuriet, courtesy Galerie Arnaud Lefebvre



Olga Theuriet

OT23141

Prototype, thread, 29 x 29 cm. 2023

Photo Olga Theuriet, courtesy Galerie Arnaud Lefebvre



Olga Theuriet

OT23236

Plastic bag, thread, 43 x 31 cm. 2023

Photo Olga Theuriet, courtesy Galerie Arnaud Lefebvre

Diana Quinby makes drawings and prints with the same spirit of involvement that she writes about Feminism and Women artists. Her recent "Self-Portraits" are both powerful and sensitive, questioning with intensity the conventions of our gaze. Mainly graphic, her art is figurative. The artist does not seek to reproduce the body, but to penetrate it through the line.

Olga Theuriet puts writing and sewing on the same level. Her research into clothing is explored in Diary texts which give birth to her visual works. In a movement of deep necessity, Olga Theuriet's works seem to give shape to the absence laying at the core of her research.

The artist pays particular attention to clothing and its inscription in language and architecture, to its social materiality and to its manufacture. In the context of daily life, her research is articulated as closely as possible to the semantic relationships between text and textile.

Contact & informations

Galerie Arnaud Lefebvre

10, rue des Beaux-Arts - 75006 Paris

+33 (0)1 43 54 55 23 / +33 (0)6 81 33 46 94

galeriearnaudlefebvre@gmail.com

www.galeriearnaudlefebvre.com

Tuesday-Saturday: 10:30-12:30 am / 2/30-6:30 pm